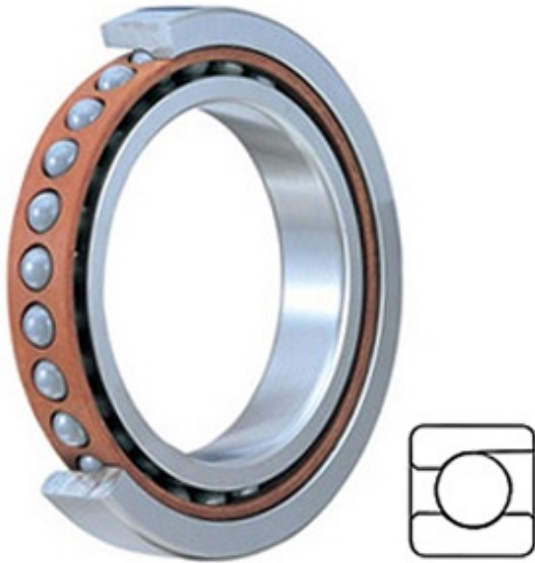




# Machinery Parts USA CORP.



2MM306WI Bearing 2D drawings and 3D CAD models

1.181 Inch | 30 Millimeter x 2.835 Inch | 72 Millimeter x 0.748 Inch | 19 Millimeter TIMKEN 2MM306WI Precision Ball Bearings

Bearing No. 2MM306WI

Category	Precision Ball Bearings
Inventory	0.0
Manufacturer Name	TIMKEN
Minimum Buy Quantity	N/A
Weight	0.341
EAN	0087796071469
Product Group	B04270
Enclosure	Open
Precision Class	ABEC 7   ISO P4
Material - Ball	Steel
Number of Bearings	1 (Single)
Contact Angle	15 Degree
Preload	None
Raceway Style	1 Rib Outer Ring
Cage Material	Phenolic
Rolling Element	Ball Bearing
Flush Ground	No
Inch - Metric	Metric
Other Features	Single Row   Angular Contact   Super High Precision
Long Description	30MM Bore; 72MM Outside Diameter; 19MM Width; Open Enclosure; ABEC 7   ISO P4 Precision; Steel Ball Material; 1 (Single) Bearings; 15 Degree



## Machinery Parts USA CORP.

	Contact Angle; Phenolic Cage Material; 1 Rib Outer Ring Rac
Category	Precision Ball Bearings
UNSPSC	31171531
Harmonized Tariff Code	8482.10.50.28
Noun	Bearing
Keyword String	Angular Contact Ball
Manufacturer URL	<a href="http://www.timken.com">http://www.timken.com</a>
Manufacturer Item Number	2MM306WI
Weight / LBS	0.75
B	0.748 Inch   19 Millimeter
d	1.181 Inch   30 Millimeter
D	2.835 Inch   72 Millimeter
d - Bore	30 mm
D - Outer Diameter	72 mm
Bearing Width	19.0 mm
do - Ball Diameter	13.493750 mm
C0 - Static Radial Rating	22200 N
Ce - Dynamic Radial Rating <sup>1</sup>	34120 N
Limiting Speed (Grease)	22100 rpm
Limiting Speed (Oil)	44200 rpm
Ball Type	STEEL
Cage Type	CR - Phenolic Outer Land Riding Cage
Bearing Weight	0.328 Kg
Design Units	METRIC
R - Inner Ring To Clear Radius <sup>2</sup>	1.0 mm
r - Outer Ring To Clear Radius <sup>3</sup>	1.0 mm
da - Inner Ring Backing Diameter	37.500 mm



## Machinery Parts USA CORP.

Da - Outer Ring Backing Diameter	65.200 mm
-------------------------------------	-----------