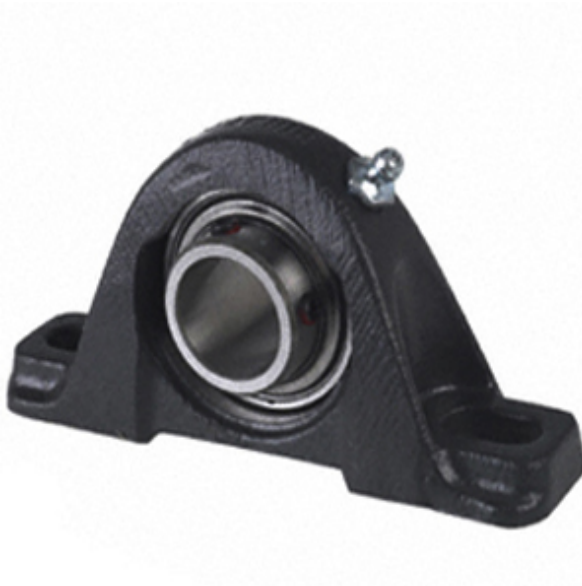




Machinery Parts USA CORP.



1.969 Inch | 50 Millimeter x 2.031 Inch | 51.59
 Millimeter x 2.189 Inch | 55.6 Millimeter TIMKEN
 YAK 50 SGT Pillow Block Bearings

Bearing No. YAK 50 SGT

YAK 50 SGT Bearing 2D drawings and 3D CAD models

Category	Pillow Block Bearings
Inventory	0.0
Manufacturer Name	TIMKEN
Minimum Buy Quantity	N/A
Weight	3.361
EAN	0087796265332
Product Group	M06110
Number of Mounting Holes	2
Mounting Method	Set Screw
Housing Style	2 Bolt Pillow Block
Rolling Element	Ball Bearing
Housing Material	Cast Iron
Expansion / Non-expansion	Non-expansion
Mounting Bolts	16 Millimeter
Relubricatable	Yes
Insert Part Number	GYE50KRRB
Seals	Double Land Riding Rubber Contact
Housing Configuration	1 Piece Solid
Inch - Metric	Metric
Other Features	Single Row Spherical Normal Duty Low Base Black Housing Powder Coated Epoxy Finish
Long Description	2 Bolt Pillow Block; 50MM Bore; 55.6MM Base to



Machinery Parts USA CORP.

	Center Height; Set Screw Mount; Ball Bearing; 132.6MM Minimum Bolt Spacing; 183.4MM Bolt Spacing Maximum; Relubricatable; Cast Iron; Double Land Riding R
Category	Pillow Block
UNSPSC	31171511
Harmonized Tariff Code	8483.20.40.40
Noun	Bearing
Keyword String	Pillow Block
Manufacturer URL	http://www.timken.com
Manufacturer Item Number	YAK 50 SGT
Weight / LBS	7.402
B	2.189 Inch 55.6 Millimeter
d	1.969 Inch 50 Millimeter
Bolt Spacing Minimum	5.22 Inch 132.6Millimeter
Actual Bolt Center to Center	0 Inch 0Millimeter
Bolt Spacing Maximum	7.22 Inch 183.4Millimeter
Nominal Bolt Center to Center	6.5 Inch 165 Millimeter
D	2.031 Inch 51.59 Millimeter
Shaft Size d	1.969 in
Bearing Type	Ball Bearing
Inside Ring Outside Diameter	2.474 in
Dimension T	1.142 in
Dimension D1	2.472 in
Series	Industrial
Weight	7.182 lb
Seal Type	Shroud Seal
Base to Center Height H	55.56 mm



Machinery Parts USA CORP.

Total Length L	200.2 mm
Total Width A	2.280 in
Bolt Hole Spacing J	158.00 mm
Bolt Hole Width N	18.3 mm
Bolt Hole Length N1	25.40 mm
Foot Height H1	17.5 mm
Total Height H2	112.7 mm
Dimension L1	66.7 mm
Inside Ring Width B	=Bearings1_Inside Ring Width= mm
Center of Bearing from End S	19.1 mm
Dimension B1	2.031 in
Static Load Rating	5210 lbf
Dynamic Load Rating	8740 lbf