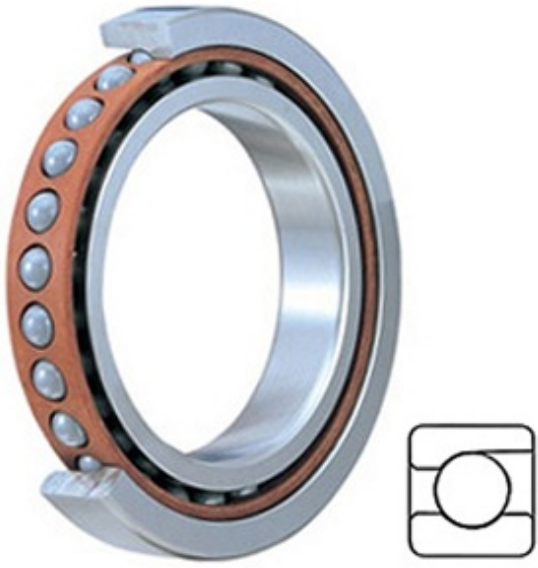




Machinery Parts USA CORP.



2MM212WI Bearing 2D drawings and 3D CAD models

2.362 Inch | 60 Millimeter x 4.331 Inch | 110 Millimeter x 0.866 Inch | 22 Millimeter TIMKEN 2MM212WI Precision Ball Bearings

Bearing No. 2MM212WI

Category	Precision Ball Bearings
Inventory	0.0
Manufacturer Name	TIMKEN
Minimum Buy Quantity	N/A
Weight	0.817
EAN	0087796070677
Product Group	B04270
Enclosure	Open
Precision Class	ABEC 7 ISO P4
Material - Ball	Steel
Number of Bearings	1 (Single)
Contact Angle	15 Degree
Preload	None
Raceway Style	1 Rib Outer Ring
Cage Material	Phenolic
Rolling Element	Ball Bearing
Flush Ground	No
Inch - Metric	Metric
Other Features	Single Row Angular Contact Super High Precision
Long Description	60MM Bore; 110MM Outside Diameter; 22MM Width; Open Enclosure; ABEC 7 ISO P4 Precision; Steel Ball Material; 1 (Single) Bearings; 15 Degree



Machinery Parts USA CORP.

	Contact Angle; Phenolic Cage Material; 1 Rib Outer Ring Ra
Category	Precision Ball Bearings
UNSPSC	31171531
Harmonized Tariff Code	8482.10.50.28
Noun	Bearing
Keyword String	Angular Contact Ball
Manufacturer URL	http://www.timken.com
Manufacturer Item Number	2MM212WI
Weight / LBS	1.8
D	4.331 Inch 110 Millimeter
B	0.866 Inch 22 Millimeter
d	2.362 Inch 60 Millimeter
d - Bore	60 mm
D - Outer Diameter	110 mm
Bearing Width	22 mm
do - Ball Diameter	15.875 mm
C0 - Static Radial Rating	48900 N
Ce - Dynamic Radial Rating ¹	71000 N
Limiting Speed (Grease)	13200 rpm
Limiting Speed (Oil)	26400 rpm
Ball Type	STEEL
Cage Type	CR - Phenolic Outer Land Riding Cage
Bearing Weight	0.787 Kg
Design Units	METRIC
Full Timken Part Number	2MM212WICR
R - Inner Ring To Clear Radius ²	1.5 mm
r - Outer Ring To Clear Radius ³	1.5 mm
da - Inner Ring Backing	69.300 mm



Machinery Parts USA CORP.

Diameter	
Da - Outer Ring Backing Diameter	101.400 mm